

A spiral-bound notebook with a light beige, textured cover and a dark brown border. The spiral binding is on the left side. The text is centered on the cover.

SIN

S Y m p t o m a t i c a n d
N o s o l o g i c

SIN (61)

- Action on Symtoms and Disease
- Divided per organs or apparatus or speciality o bodily area in 13 groups
- Some with general action (ex. pain, fever)

Organism SIN

- SYmptomatic and Nosologic
 - Nosography or symptoms

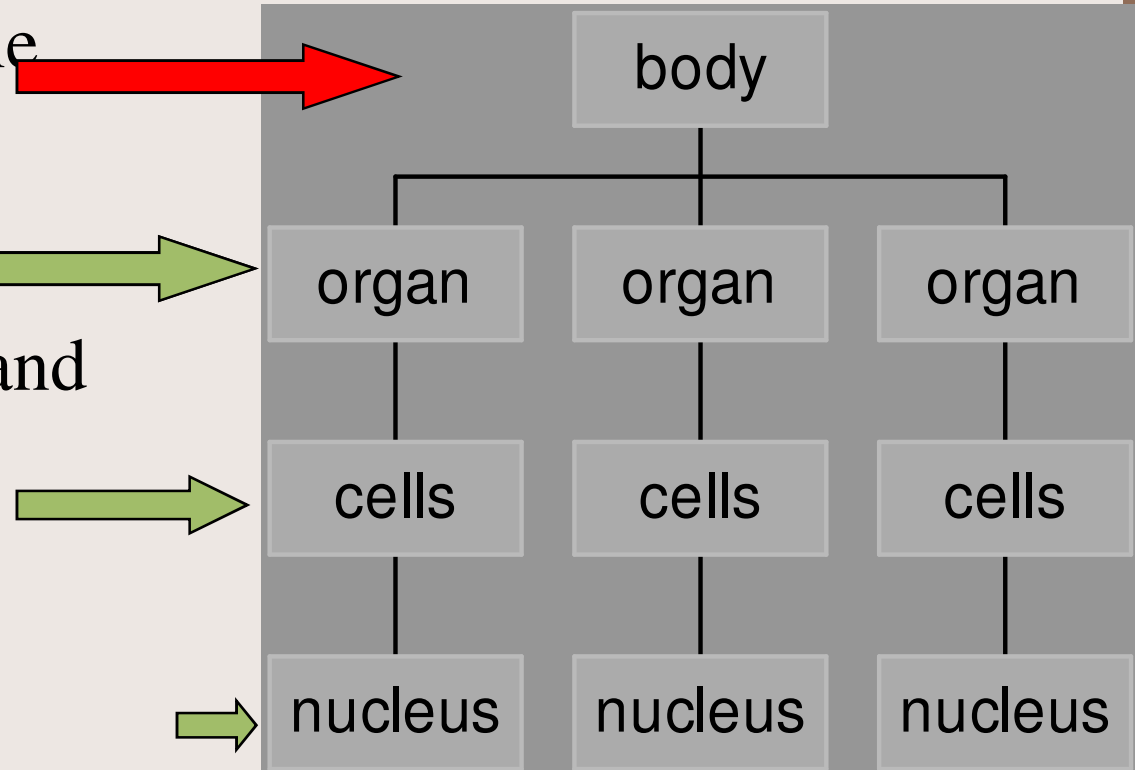
– homeopathic, phytoterapeutic, organs-therapeutic, nosode, litho-therapeutic, flowerbuds, flowers

Very complex because they are unbalanced complex circuits (the disease is evident)

Anatomical-functional organization of the complexity

Everyone separate
by a membrane

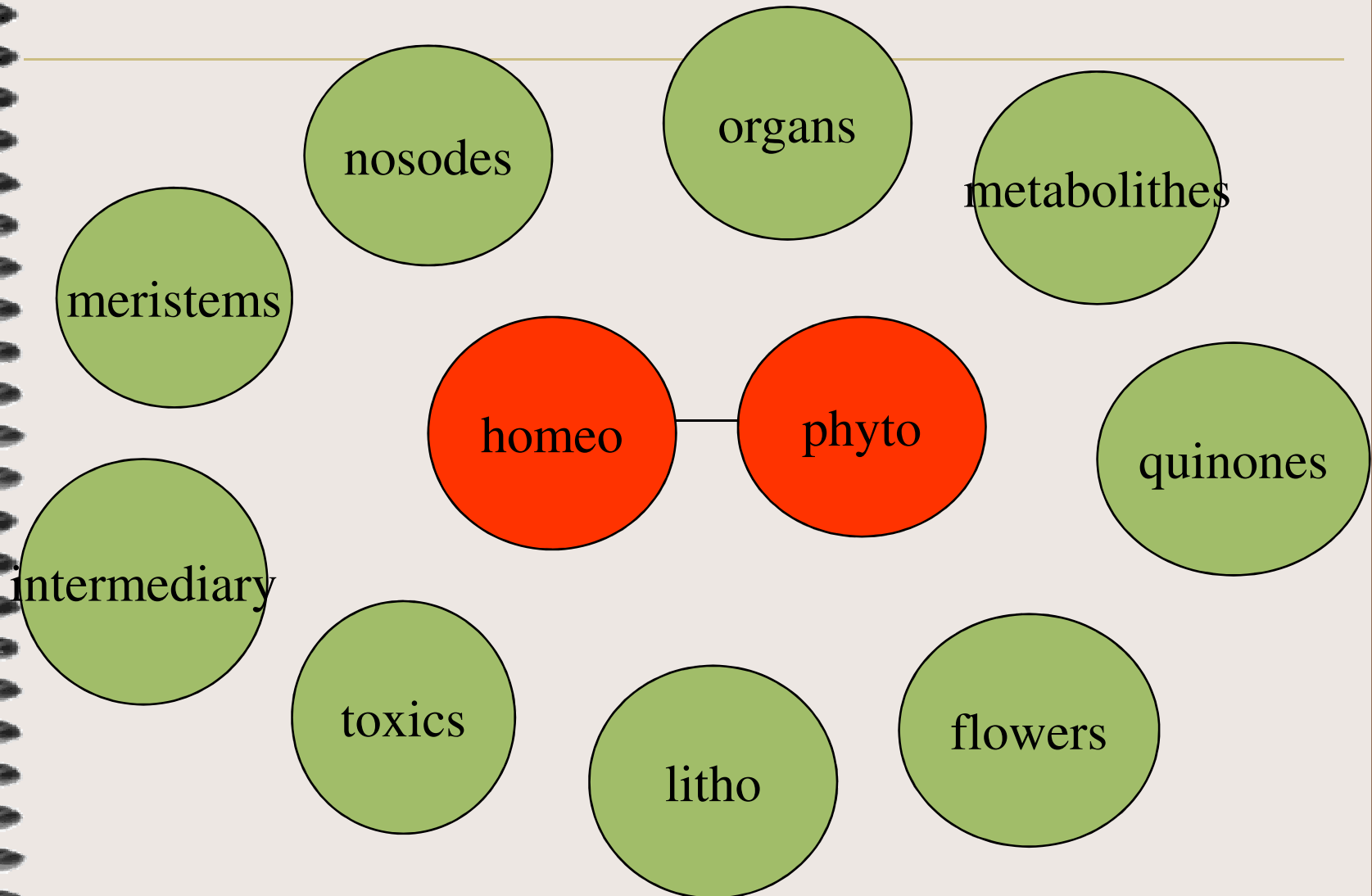
Like briefcases and
files



Complexity

- Complexity of the remedy
- If is present an evident pathology is necessary to intervene, mildly too, on varied levels of body's functioning
- **THE PATHOLOGY IS AN ALARM SIGNAL**

SIN



SIN

- homeopathic
- phytoterapeutic
- organs-therapeutic
 - support of organ
- nosode
- litho-therapeutic
 - Dechelating, enzymatic, ground th.
- buds
 - draining, regenerative
- flowers
 - psyche

SIN 53

- Allergens mites
- allergens pets
- allergens home's powder
- alnus glutinosa
- argentum nativum
- betula verrucosa
- calcopirite aurifera
- carpinus betulus
- echinacea angustifolia
- ephedra vulgaris
- eupatorium perfoliatum
- euphrasia officinalis
- formicicum acidum
- galphimia glauca
- Histaminum
- hyssopus offic.
- Luffa operculata
- mercurius corrosivus
- pirolusite
- pollens
- ribes nigrum
- rosa canina
- scrophularia nodosa
- sticta pulmonaria
- uncaria tomentosa
- verbena officinalis
- bronchus
- liver
- nasal mucosa
- sinusal mucosa
- kidney
- adrenal



Categories per apparatus or areas

- psyche
- digestive
- renal
- genital
- aesthetic
- skin
- odontostomatology
- locomotive
- infective
- cephalic
- endocrine
- allergy
- ematovascular

A spiral-bound notebook with a textured, light brown cover. The word "use" is written in a black, serif font in the center of the cover. The notebook is bound on the left side with a silver metal spiral. The entire notebook is set against a dark brown background.

use

How

- Drops 20*3/day
- In acute 7 drops every 30 minuts

use

- according to pathology or symptoms
- for an immediate improvement in the case of deep therapy, waiting for its results
- alone or in association to allopathic therapies
- reinforcement in the therapies using the first three (anxiety, depression, insomnia)

How many times

- Acute cases until the solution
- Chronic cases for a long time
- Some to start before the symptoms (allergies)

Associations

- All possible cause the SIN is the first step AND DOESN'T HAVE TO REMAIN ONLY TO THE SYMPTOM
- the 13 groups can be a guide of the others' choice (Key technique)

A spiral-bound notebook with a light beige, textured cover. The word "handbook" is printed in a black, serif font in the center of the cover. The spiral binding is on the left side, and the notebook is set against a dark brown background.

handbook

<p style="text-align: center;">nervous system</p> <p>SIN 1 anxiety SIN 2 depression SIN 3 insomnia decrease 1, increase 2, regularization 3 of nervous tone</p>	<p style="text-align: center;">aesthetic</p> <p>SIN 25 obesity adiposity (general and localized) SIN 26 cellulitis</p>	<p style="text-align: center;">cephalic</p> <p>SIN 46 migraine headache SIN 47 ocular ailments SIN 48 tinnitus vertigo</p>
<p style="text-align: center;">digestive</p> <p>SIN 4 stomatitis herpes SIN 5 nausea vomiting SIN 6 gastritis (heartburn) SIN 7 peptic ulcer SIN 8 colitis meteorism SIN 9 pancreatitis (amylase, indigestible faeces) SIN 10 hepatic insufficiency (transaminase, dyspepsia) SIN 11 cholecystitis biliary calculi (ascending colic) SIN 12 diarrhea SIN 13 constipation</p>	<p style="text-align: center;">skin</p> <p>SIN 27 dermatitis dermatosis SIN 28 acne furunculosis SIN 29 psoriasis SIN 30 alopecia (annexes)</p>	<p style="text-align: center;">endocrine</p> <p>SIN 49 hyperthyroidism SIN 50 hyperglycaemia</p>
<p style="text-align: center;">renal</p> <p>SIN 14 renal insufficiency (azotemia, creatinine) SIN 15 cystitis urethritis SIN 16 renal lithiasis (descending colic)</p>	<p style="text-align: center;">odontostomatology</p> <p>SIN 31 dentition caries (teeth) SIN 32 parodontosis gingivitis (gengiva)</p>	<p style="text-align: center;">allergy</p> <p>SIN 51 sinusitis (general) SIN 52 asthma (and equivalents) SIN 53 allergic pollenosis (high ways)</p>
<p style="text-align: center;">genital</p> <p>SIN 17 prostatitis prostatic hypertrophy (nocturia) SIN 18 impotence SIN 19 premenstrual syndrome SIN 20 amenorrhea SIN 21 dysmenorrhea SIN 22 annexitis (hypogastric pains) SIN 23 candidosis and fungal vaginitis SIN 24 climacteric (flushing) osteoporosis</p>	<p style="text-align: center;">locomotive</p> <p>SIN 33 anti-pain (symptomatic) SIN 34 anti-phlogistic (general) SIN 35 arthritis (phlogosis) SIN 36 arthrosis (degeneration) SIN 37 gout (uric acid) SIN 38 spasmophilia cramp</p>	<p style="text-align: center;">ematovascular</p> <p>SIN 54 anaemia (iron) SIN 55 peripheral and cerebral circulation (arterial) SIN 56 hypertension SIN 57 cardiocirculatory insufficiency SIN 58 tachycardia SIN 59 hypercholesterolaemia arteriosclerosis SIN 60 phlebopatya varices SIN 61 haemorrhoids</p>
<p style="text-align: center;">infective</p> <p>SIN 39 immunestimulating (general) SIN 40 otitis SIN 41 laryngitis (aphonia) SIN 42 tonsillitis SIN 43 bronchitis cough SIN 44 influence SIN 45 fever</p>		<h1>SIN</h1>

psyche

- SIN 1 anxiety
- SIN 2 depression
- SIN 3 insomnia

psyche

- SIN 1 anxiety (slow down)
- SIN 2 depression (accelerate)
- SIN 3 insomnia (regulate)

digestive

- SIN 4 stomatitis herpes
- SIN 5 nausea vomiting
- SIN 6 gastritis
- SIN 7 peptic ulcer
- SIN 8 colitis meteorism
- SIN 9 pancreatitis
- SIN 10 hepatic insufficiency
- SIN 11 cholecystitis biliary calculi
- SIN 12 diarrhea
- SIN 13 constipation

digerente

- SIN 4 stomatitis herpes
- SIN 5 nausea vomiting
- SIN 6 gastritis (heartburn)
- SIN 7 peptic ulcer
- SIN 8 colitis meteorism
- SIN 9 pancreatitis (amylase, indigestible faeces)
- SIN 10 hepatic insufficiency (transaminase, dyspepsia)
- SIN 11 cholecystitis biliary calculi (ascending colic)
- SIN 12 diarrhea
- SIN 13 constipation

renal

- SIN 14 renal insufficiency
- SIN 15 cystitis urethritis
- SIN 16 renal lithiasis

renal

- SIN 14 renal insufficiency (azotemia, creatinine)
- SIN 15 cystitis urethritis
- SIN 16 renal lithiasis (descending colic)

genital

- SIN 17 prostatitis prostatic hypertrophy
- SIN 18 impotence
- SIN 19 premenstrual syndrome
- SIN 20 amenorrhea
- SIN 21 dysmenorrhea
- SIN 22 annexitis
- SIN 23 candidosis and fungal vaginitis
- SIN 24 climacteric osteoporosis

genital

- SIN 17 prostatitis prostatic hipertrophy (nocturia)
- SIN 18 impotence
- SIN 19 premenstrual syndrome
- SIN 20 amenorrhea
- SIN 21 dysmenorrhea
- SIN 22 annexitis (hypogastric pains)
- SIN 23 candidosis and fungal vaginitis
- SIN 24 climacteric (flushing) osteoporosis

adipose - aesthetic

- SIN 25 obesity adiposity
- SIN 26 cellulitis

adipose - aesthetic

- SIN 25 obesity adiposity (general and localized)
- SIN 26 cellulitis

skin

- SIN 27 dermatitis dermatosis
- SIN 28 acne furunculosis
- SIN 29 psoriasis
- SIN 30 alopecia

skin

- SIN 27 dermatitis dermatosis
- SIN 28 acne furunculosis
- SIN 29 psoriasis
- SIN 30 alopecia (annexes)

teeth

- SIN 31 dentition caries
- SIN 32 parodontosis gingivitis

teeth

- SIN 31 dentition caries (teeth)
- SIN 32 parodontosis gingivitis (gengiva)

locomotive

- SIN 33 antipain
- SIN 34 antiphlogistic
- SIN 35 arthritis
- SIN 36 arthrosis
- SIN 37 gout
- SIN 38 spasmophilia cramps

locomotive

- SIN 33 antipain (symptomatic)
- SIN 34 antiphlogistic (general)
- SIN 35 arthritis (phlogosis)
- SIN 36 arthrosis (degeneration)
- SIN 37 gout (uric acid)
- SIN 38 spasmophilia cramps

ORL - respiratory

- SIN 39 immunestimulating
- SIN 40 otitis
- SIN 41 laryngitis
- SIN 42 tonsillitis
- SIN 43 bronchitis cough
- SIN 44 influenza
- SIN 45 fever

ORL - respiratorio

- SIN 39 immunestimulating (general)
- SIN 40 otitis
- SIN 41 laryngitis (aphonia)
- SIN 42 tonsillitis
- SIN 43 bronchitis cough
- SIN 44 influenza
- SIN 45 fever

cephalic

- SIN 46 migraine headache
- SIN 47 ocular ailments
- SIN 48 tinnitus vertigo

cephalic

- SIN 46 migraine headache
- SIN 47 ocular ailments
- SIN 48 tinnitus vertigo

endocrine

- SIN 49 hyperthyroidism
- SIN 50 hyperglycaemia

endocrine

- SIN 49 hyperthyroidism
- SIN 50 hyperglycaemia

allergy

- SIN 51 sinusitis
- SIN 52 asthma
- SIN 53 allergic pollenosis

allergy

- SIN 51 sinusitis (general)
- SIN 52 asthma (and equivalents)
- SIN 53 allergic pollenosis (high ways)



haematic - vascular - circulatory

- SIN 54 anaemia
- SIN 55 peripheral and cerebral circulation
- SIN 56 hypertension
- SIN 57 cardiocirculatory insufficiency
- SIN 58 tachycardia
- SIN 59 hypercholesterolaemia
arteriosclerosis
- SIN 60 phlebopaty varices
- SIN 61 haemorrhoids

haematic-vascular-circulatory

- SIN 54 anaemia (iron)
- SIN 55 peripheral and cerebral circulation (arterial)
- SIN 56 hypertension
- SIN 57 cardiocirculatory insufficiency
- SIN 58 tachycardia
- SIN 59 hypercholesterolaemia arteriosclerosis
- SIN 60 phlebopatya varices
- SIN 61 haemorrhoids

A spiral-bound notebook with a light beige, textured cover. The spiral binding is on the left side. The text "The end" is printed in a black, serif font in the center of the cover. The notebook is set against a dark brown background.

The end