

DRE

Draining
(toxins)



DRE-draining

toxins



Basic Theory

- ❖ The organism is sick because there are:
 - toxins (products of metabolism that is necessary eliminate) or
 - toxics (extraneous substances harmful for all or for some)

that alter its correct functionality

- ❖ The organism is sick because there are:
 - toxins (products of metabolism that is necessary eliminate)
 - toxics (extraneous substances harmful for all or for some)

that alter its correct functionality

The management of waste in the cell

- ❖ The identification of the genetic program that controls this feature provides a new potential therapeutic target for neurodegenerative diseases, and lysosomal
- ❖ The news has taught us that an efficient waste management is essential for the proper functioning of a complex society, and this also applies to the complex system represented by our agency, where to arrange for the disposal of waste are the cellular lysosomes.
- ❖ Are these organelles to degrade many molecules of harmful substances present in the cell, including those that accumulate in cells of patients suffering from Huntington's disease and Alzheimer's, as well as a number of rare diseases known as lysosomal storage disorders.
- ❖ Now a group of researchers from the Telethon Institute of Genetics and Medicine (TIGEM) of Naples, led by Andrea Ballabio identified the genetic program that controls the biogenesis and the level of activity of lysosomes, and shall give notice in an article before signing Marco Sardiello , published in "Science".

- ❖ The lysosomes are specialized in the demolition of macromolecules in the cell as a result of processes of endocytosis, phagocytosis or autofagia, the latter linked to the processes of normal replacement of other organelles in the cell. The number and level of activity of lysosomes in cells depends on the tissue type, age, environmental conditions, but so far it was not clear what the mechanisms that allow this modulation.
- ❖ In particular, researchers in Naples have found that most of the lysosomal gene is expressed in a coordinated manner under the control of the transcription factor TFEB: when there are abnormal conditions of accumulation of harmful substances, TFEB pass from the cytoplasm to the nucleus where the active its target genes, increasing biogenesi of lysosomes and significantly increasing the capacity of the degradation of molecular complexes such as glicosamminoglicani and proteins that cause Huntington's disease.
- ❖ The researchers also found that the micro-mir-128 RNA, which has a function of lowering the level of activity of TFEB, is significantly over-expressed in the brain of patients suffering from Alzheimer's disease or when there is a prion-induced neurodegeneration or chemicals.
- ❖ The identification of the genetic program that soprassiede these features, note the authors, provides a new potential therapeutic target to combat both diseases neurodegenerative both lysosomal. (gg)
- ❖ (26 June 2009) © 1999 - 2009 Le Scienze

NATURAL ELIMINATIONS:

- ❖ **cough, sneezes, lacrimation, sweat, vomiting, diarrhea**

CLASSIC RULES

- ❖ **definition: elimination of effluent liquids**
- ❖ **in medicine: physiologic or pathologic *liquids***
- ❖ **1) excretion of toxic and anomalous metabolites or catabolites**
- ❖ **2) transport outside of *substances* that alter the normal homeostasis and organism's functioning**

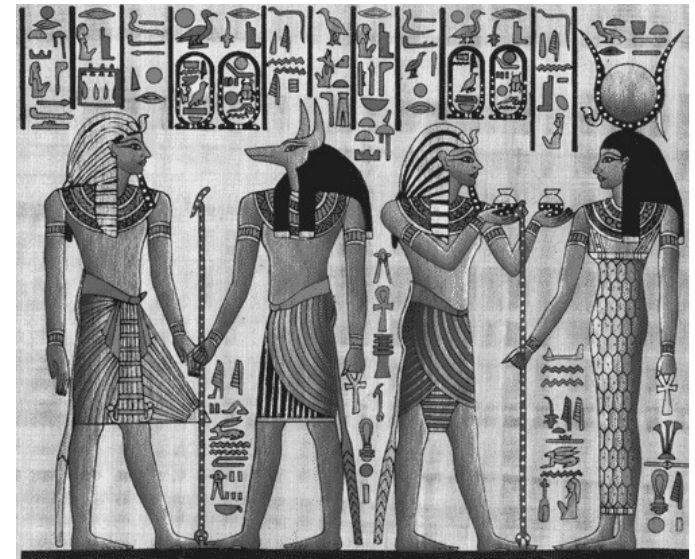
VARIOUS DRAINING TECHNIQUES *in the medicines*

- ❖ **HISTORIC**
- ❖ **TRADITIONAL**

EGYPTIAN MEDICINE

**HEART - 22 VESSELS - RECTUM -
DISEASES**

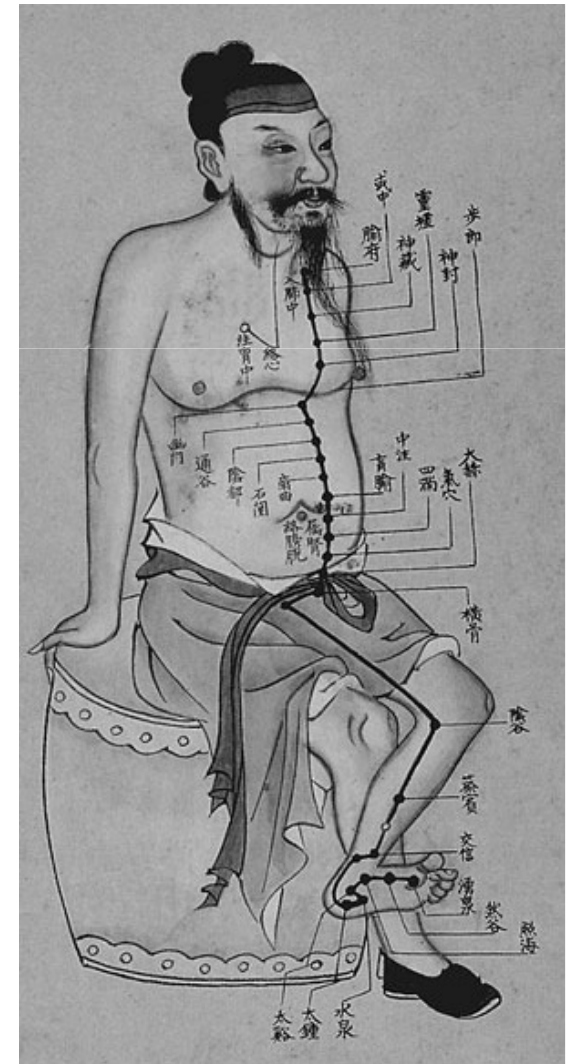
- ❖ **ALIMENTARY RESIDUES – PAINFUL
SUBSTANCES IN CIRCLE**
- ❖ **3 DAYS CONSECUTIVE PURGATION EVERY
MONTH**
- ❖ **ENEMAS - EMETIC**



MTC

EIGHT THERAPEUTIC RULES:

- ❖ **TU FA: VOMIFICATION**
- ❖ **HAN FA: SWEATIFICATION**
- ❖ **XIA FA: PURGATION (F C CATHARTIC)**
- ❖ **XIAO FA: DISPERSION (DIURESIS)**
- ❖ **HE FA: HARMONISATION**
- ❖ **WEN FA: CALORIFICATION**
- ❖ **QING FA: REFRIGERATION**
- ❖ **BU FA: TONIFICATION**



MTC

**ELIMINATION OF PERVERSE
ENERGY IN PRECOCIOUS
STAGE:**

- ❖ **SWEATING**
- ❖ **PURGATION**
- ❖ **VOMIFICATION**

MTC

❖ **SWEATIFICATION: PERVERSE E.
IN THE SKIN**

**– BY COLD WIND (INFLUENCE) P GI
V**

**– BY HOT WIND (PHARYNGITIS) P GI
TR**

**– BY WATER WIND (SWOLLEN FACE)
P GI V**

MTC

- ❖ **VOMIFICATION: PERVERSE E.
IN HIGH**
 - **(THORACIC-GASTRIC
STAGNATION)**
 - **MC**

MTC

- ❖ **PURGATION: PERVERSE E. IN THE INTESTINE**
- ❖ **RT E GI**

METEM

- ❖ ENS VENENI
- ❖ ENS NATURALIS
- ❖ ENS ASTRALIS
- ❖ ENS SPIRITUALIS
- ❖ ENS DEI



METEM

- **HEAT COLD DRY HUMID**

- ❖ **IN THE BODY HUMOURS:**

- **YELLOW BILE(SAFRA) CS**

- **BLOOD (DUM) CU**

- **FLEGMA (BULGHUM) FU**

- **BLACK BILE (SAUDA) FS**

TO EXPEL THE UNBALANCED HUMOURS



Ayurveda



Ayurveda

❖ PANCA KARMA

– EMESIS

– PURGATION

– TWO ENEMA

– INHALATION

elimination of altered VATA-PITTA-KAPHA

❖ PREVENTION - CARE - LONGEVITY

❖ PRE-PANCAKARMA OR PURVA

popular drainages:

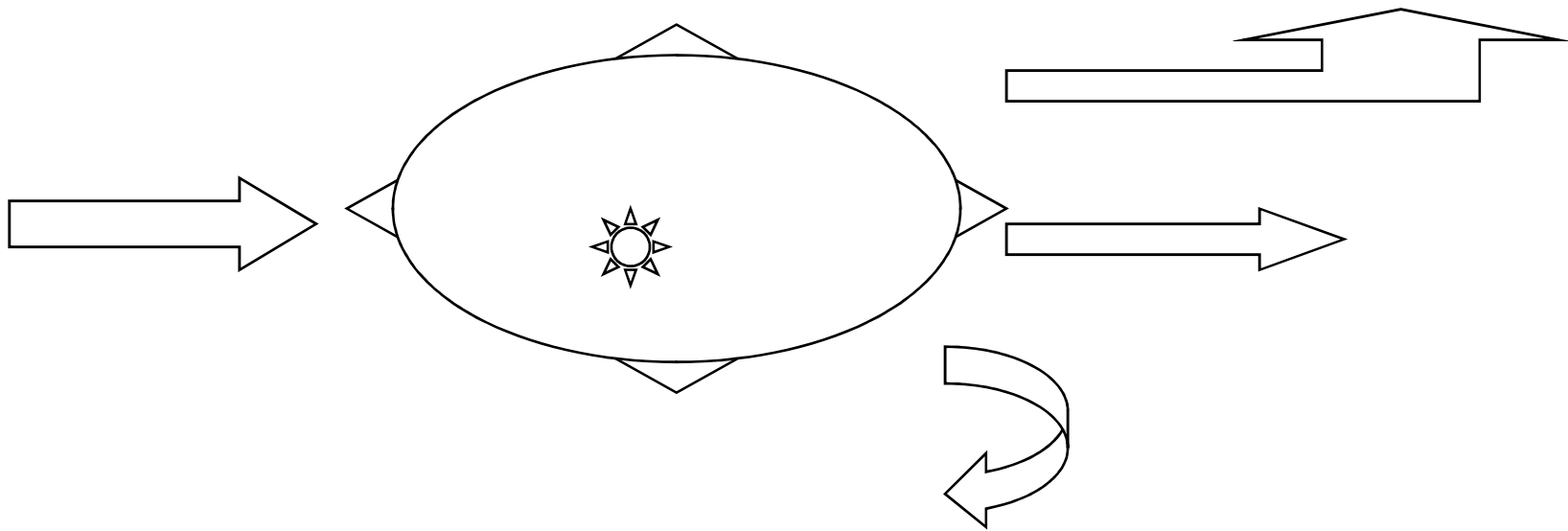


- ❖ **mild plants and in low dose
(1/2 - 1/4 of the dose)**
 - ❖ **pre-therapy:**
 - **at the most 1 month**
 - ❖ **intra-therapy:**
 - **to mitigate the medicines**
 - ❖ **post-therapy:**
 - **Draining-therapeutic plants to complete**
- GEMTHERAPEUTIC/COMPLEX**

Drainage - Classic rules

*COMMONLY UNDERSTANDING
DRAINAGE:*

**SCHEMATIC FUNCTIONING OF THE HUMAN
THERMAL MACHINE (*CHEMISTRY*)
INPUT-OUTPUT**



DRAINAGES:

- ❖ **INTESTINAL**
- ❖ **RENAL**
- ❖ **CUTANEOUS**
- ❖ **RESPIRATORY**
- ❖ **HEPATIC**

drainage

UNDIFFERENTIATED:

❖ **ALL THE EXCRETORY**

EMUNTORIAL:

❖ **RENAL**

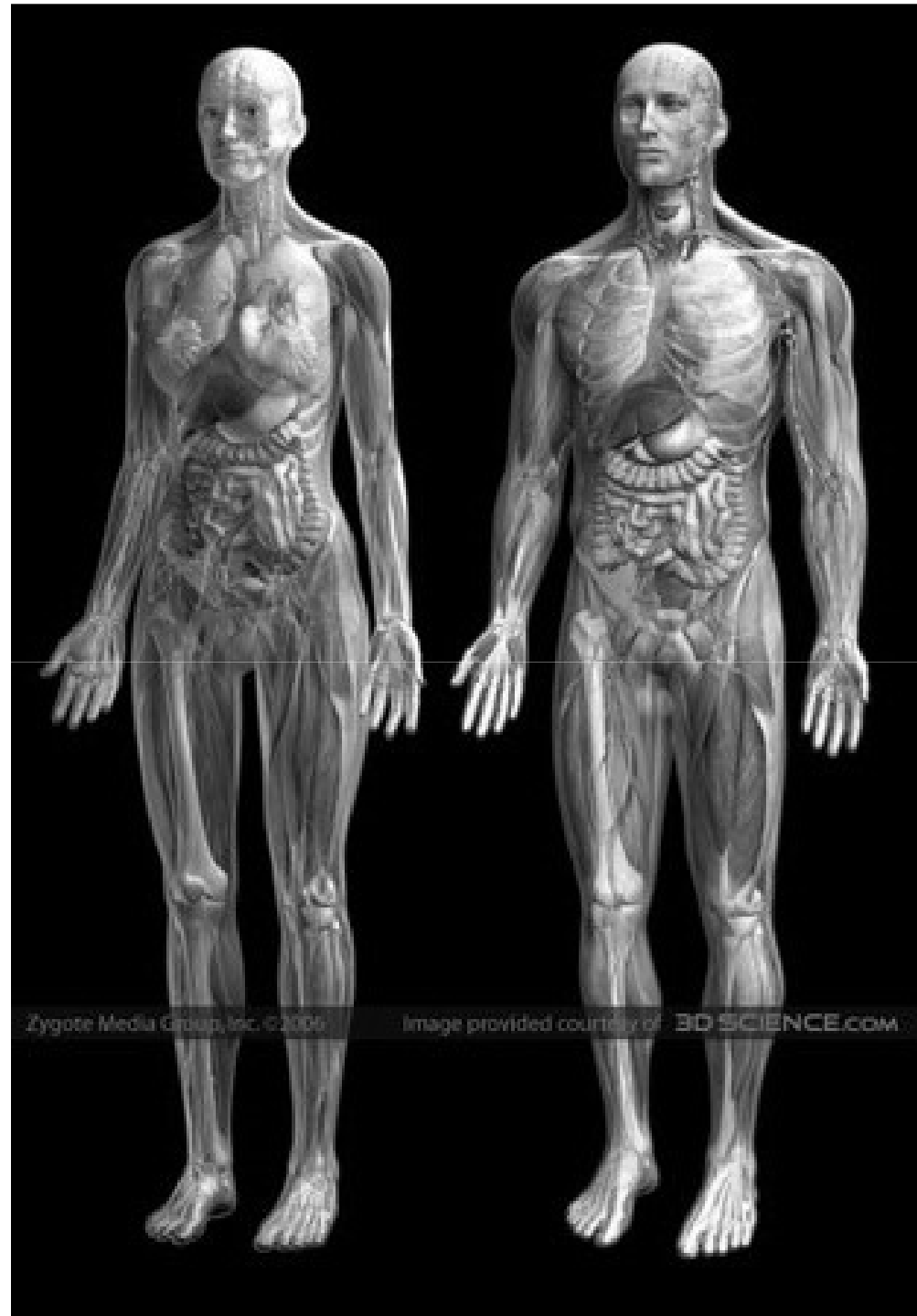
❖ **HEPATIC**

❖ **INTESTINAL**

❖ **PULMONARY**

❖ **MUCOSAL**

❖ **CUTANEOUS**



Zygot Media Group, Inc. ©2006

Image provided courtesy of [3D SCIENCE.COM](http://3DSCIENCE.COM)

input

scheme of body's functioning:

❖ **1)food**

- **digestive app., liver, blood, mesenchyme, cell, mesenchyme, limphatic, blood, kidneys and mucous membrane (intestine and respiratory), skin**

❖ **2)skin**

- **blood**

❖ **3)air**

- **respiratory app., blood**

❖ **4)frequencies**

Less alimentary toxics

- ❖ **DIET, FAST, intolerances**
- ❖ **good absorption: complete digestive and dissociation (formation of toxic mixtures)**

orthomolecular dissociated diet

- **pasta or rice or potatoes**
- **cooked vegetables**
- **bananas**

- **meat or fish**
- **vinegar or lemon**
- **sauce ***

- **herbs**
- **water and infusions**
- **honey**
- **olive's oil**
- **wholemeal marine salt**
- **oily dry fruits (little)**
- **raw vegetables (always in the evening)**

- **Three fruits on an empty stomach**

PERIODICAL FASTS OR UNA TANTUM

- ❖ **BREAKFAST: 2 CUPS OF HERBAL TEA WITH $\frac{1}{2}$ TEASPOON OF HONEY OR BLACK TEA +1 TEASPOON OF ENGLISH SALT**
- ❖ **LUNCH: 1/4 LT OF CLEAR BROTH (1 CARROT + 1/4 CELERY + HERBS) OR JUICE**
- ❖ **AFTERNOON: HERBAL TEA WITH HONEY**
- ❖ **DINNER: FRUIT JUICE OR VEGETABLES OR BROTH WATER 2 LT**
- ❖ **EVACUATION EVERY 2 DAYS (ENEMA OR ENGLISH SALT)**

*Do not be poisoned during the
detoxification*

- ❖ **food and intolerances**
 - **loss of weight is re-poisoning**
- ❖ **diets:**
 - **orthomolecular dissociated**
- ❖ **disinflammation of the intestine**

output

scheme of body's functioning:

- ❖ **food, digestive app., liver, blood, mesenchyme, cell, mesenchyme, lymphatic, blood, kidneys and mucous membrane (intestine and respiratory), skin**

DRAINAGE

Movement

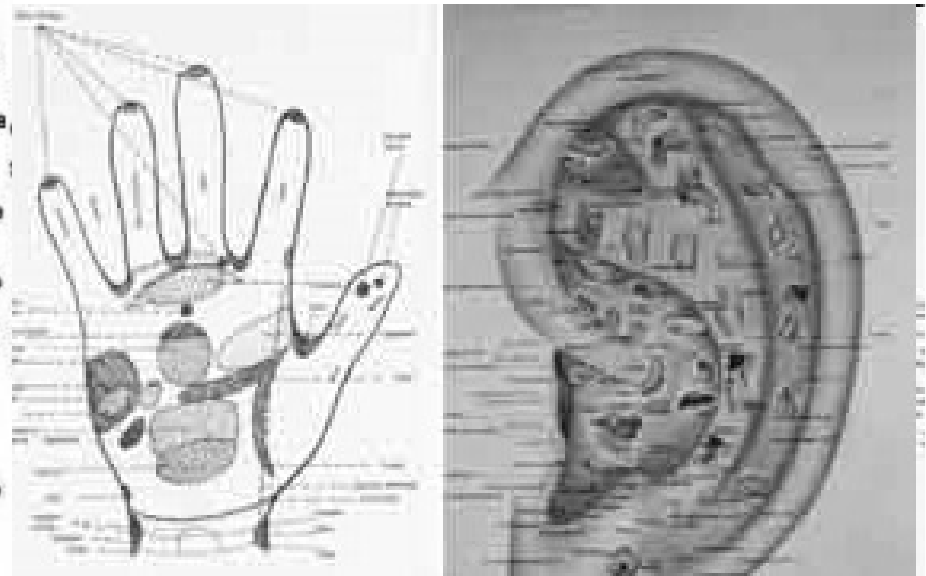
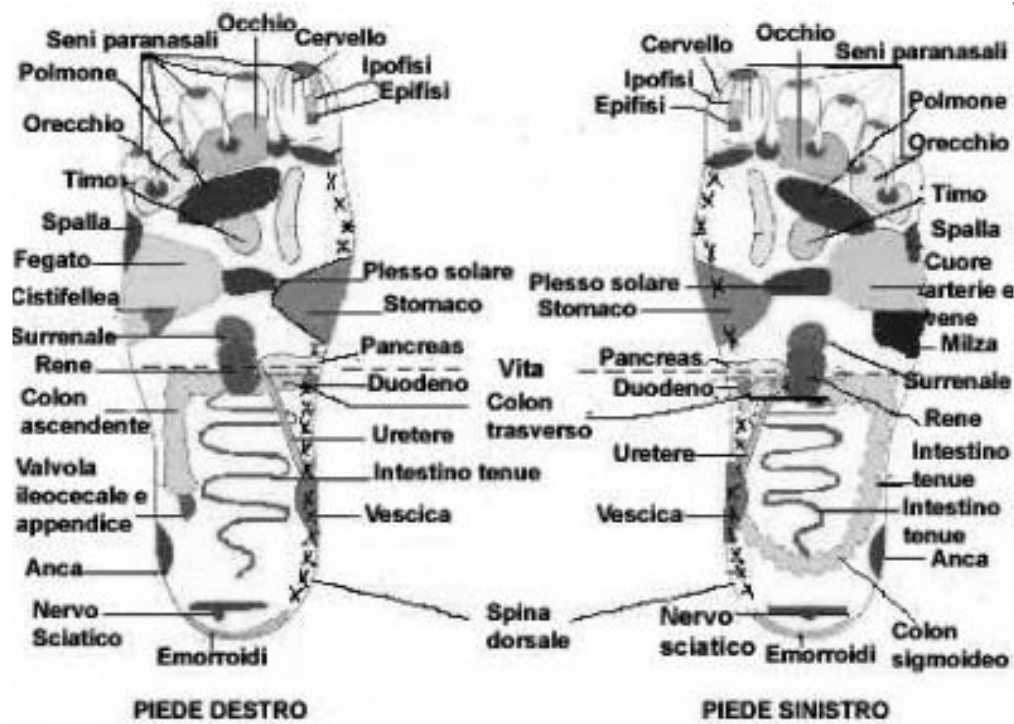
- ❖ Massages
- ❖ Physical activity
- ❖ Exogenous or endogenous heat

Breathing techniques

- ❖ Relaxation
- ❖ Diaphragm's movement on abdomen and thorax

Reflexologies

❖ Stimulus of excretories



Homeopathy



HOMEOPATHIC D.

**HYSTORY: NEBEL (LATER TYPOLOGY C F FL)
THEN VANNIER (LATER CONSTITUTIONS AND ZISSU)
E ROUY (DRAINAGE)**

**HERING'S LAW: FROM THE INTERIOR TO THE PERIPHERY
(ELIMINATION)
ALSO NEBEL FOLLOWS THE HUMORAL THEORY OF
"CHANNELIZATION"**

**IN LOW DILUTIONS C3 D6-8
BIS-TER IN DIE
COMPOUNDS (3-5)
1-2 WEEKS**

HEPATIC:

CHEL CHI TAR SOL CARD PODO

PANCREAS:

IR SENna

SPLEEN:

QUERC CEAN

GENITALS:

SEL ACT HELON BUR

DIGESTIVE:

ALoe ORNIT HYDR

RECTUM:

AESC RUT PAEO HAM

KIDNEY:

SOL BERB PAR FORM SABal CALCOSS

RESPIRATORY:

ALLIUM DRO EUPHR

SKIN:

URT ZEA SAPON

CARDIAC:

CRAT STRO CACT

VENOUS:

ARN BELLIS CALend CHI HAM AESC

OMOTOXICOLOGY:



H.H. Reckeweg

❖ **EXOGENOUS TOXINS**

- (VIRUS, BACTERIA, ALIMENTARY TOXINS, ENVIRONMENTAL POLLUTANTS, PHARMACOLOGICAL MOLECULES)

DIS

❖ **ENDOGENOUS TOXINS**

- INTERMEDIATE PRODUCTS, FINAL CATABOLITES

DRE

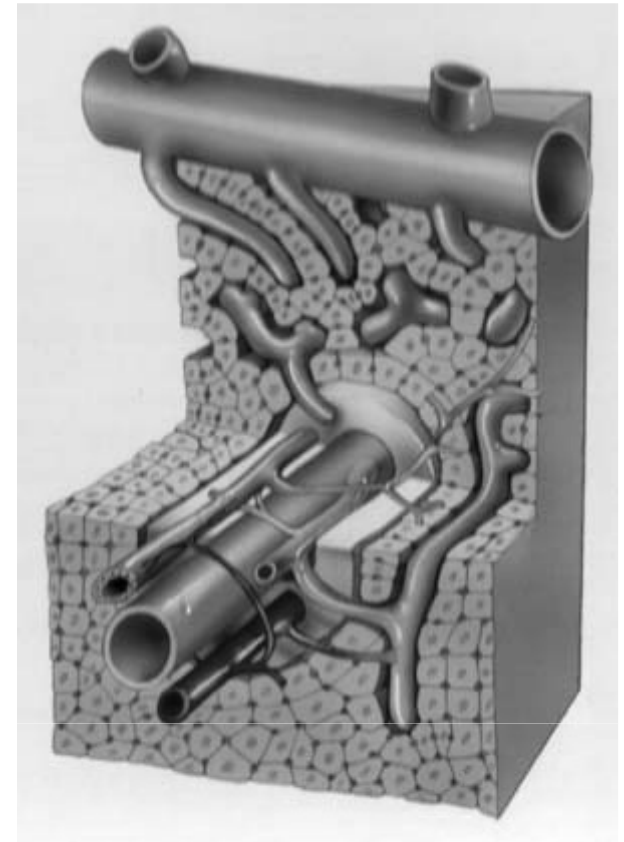
physiology

- ❖ **Entry, filing station (interstitial tissue), exit (excretory)**
- ❖ **the drainage of excretory system and connective tissue is useful to protect the cellular functions (third phase of intoxication)**

- ❖ excretory: decongestion
(antiphlogistic-antispastic) on the
same and stimulus on other
normals (vicarious)
- ❖ cellular: unblock and stimulus
(coenzymes)

❖ DRAINING MEDICINES:

- regularizing
- regenerating,
- stimulating,



- ❖ **VON BERTALANFFY:**
 - **FLOW SYSTEM IN DYNAMIC BALANCE**
- ❖ **THE DISEASES REBALANCE THE HOMEOSTASIS WITH NEUTRALIZATIONS, ELIMINATIONS AND COMPENSATIONS**

❖ **SYSTEM OF BIG DEFENSE**

❖ **HOMOTOXICOSIS TABLE:**

❖ **HUMORAL PHASES (EMOLIMPHATIC AND MESENCHYMAL LIQUID):**

- **EXCRETION, REACTION OR PHLOGOSIS (NEUTRALIZE AND EXPEL)**

❖ **PHASES OF THE FUNDAMENTAL SUBSTANCE (AMORPHOUS SUBSTANCE OF CONNECTIVE PERICELLULAR FIBRILLARY PERIOD) (BIDIRECTIONAL, FROM THE EXTERNAL OR THE CELL):**

- **DEPOSIT (MESENCHYME) AND IMPREGNATION (PARENCHYME LESS RESISTANT)**

❖ **CELLULAR PHASES:**

- **DEGENERATION, DEDIFFERENTIATION**

components

Toxins DRE

❖ DRAining

– meristems

DRE



meristems

The Drainage

- ❖ The drainage has to promote delicately the excretory's function, as well as “regenerate” it.
- ❖ In addition has to solicit other excretories that vicariate the overloads
- ❖ Such work is did, traditionally, from the Gem-therapeutic

The gem-therapeutic

- ❖ Have specific draining, rejuvenation and stimulus action.
- ❖ in DH1

DRE

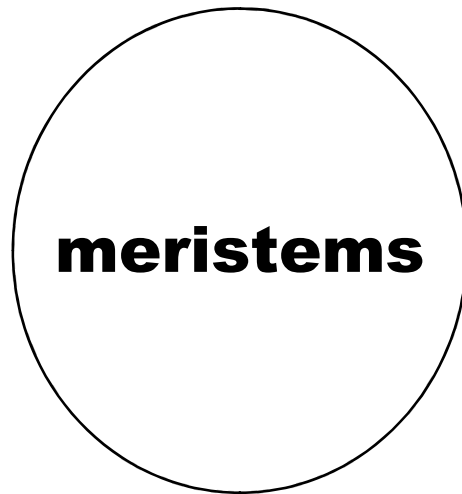
- ❖ Meristems
- ❖ D4
- ❖ Have typically the action :
 - draining
 - regenerating
- ❖ to stimulate and support the excretory already overloaded
- ❖ Complexes to stimulate the excretory not overloaded

DRE 7

- ❖ *Abies pectinata*
- ❖ *alnus incana*
- ❖ *ampelopsis weitchii*
- ❖ *betula pubescens*
- ❖ *buxus sempervirens*
- ❖ *Fraxinus excelsior*
- ❖ *pinus montana*
- ❖ *ribes nigrum*
- ❖ *vitis vinifera*

4 DH

DRE



use

prescription

❖ Medical history

- Life habits
- Congenital or acquired weakness after excretory diseases
- Vicarious troubles (intestine, urinary ways, exc...) of elimination
- With M

DRE use

- ❖ alone
 - slight disease
- ❖ Pre-therapy
 - known poisonings (medicines, etc...), deep or old disease, deep-action drugs, life habits
- ❖ Therapy
 - Therapy's reinforcement, deep medicine, allopathic medicines, loss of weight
- ❖ Post-therapy
 - specific finish
- ❖ Prevention
 - bad feeding, support to weak excretory, periodical detoxification (see protocols)

DRE use

❖ PERIODICAL CYCLES

Like DRE

Cold infusion

❖ 60 drops in half a litre of water

handbook

DRE

1 arteries

2 skin

3 immune

4 digestive glands

5 intestine

6 lymph

7 articulations

8 F. genital

9 respiratory

10 M. genital

11 urinary

12 nervous

13 thyroid

14 veins

15 ICS axis

16 mesenchymal

CLASSIC

- ❖ Excretory:
 - 2 skin.
 - 4 digestive glands.
 - 5 intestine.
 - 9 respiratory.
 - 11 urinary
- ❖ Ways:
 - 1 arteries.
 - 6 lymph.
 - 14 veins
- ❖ Internal:
 - 16 mesenchymal.
 - 7 articulations

DRE

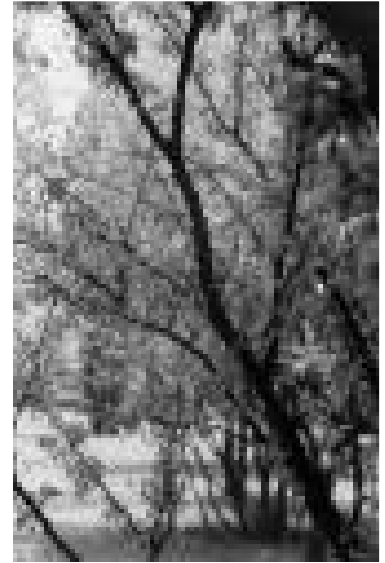
PNEI

- PN: 12 nervous
- E Endocrine:
 - 8 F. genital
 - 10 M. genital
 - 13 thyroid.
 - 15 ICS axis
- I: 3 immune

DRE

- ❖ Classic: to choose
 - the excretory (2.4.5.9.11),
 - the way (1.6.14),
 - to finish with the internal (16)

- ❖ Regulatory:
 - PN (12)
 - E (8.10.13.15)
 - I (3)



The Classic protocol choose and prescribe (in order):

- the excretory
 - 2 skin
 - 4 liver gallbladder pancreas
 - 5 gastrointestinal
 - 9 respiratory
 - 11 urinary
- the way
 - 1 arteries
 - 6 lymphatic
 - 14 veins
- internal
 - 16 metabolic mesenchymal

The Draining protocol PNEI

choose and prescribe (in order) :

– P.N.

- 12 nervous

– E.

- 8 F genital
- 10 M genital
- 13 thyroid
- 15 hypothalamus cortical adrenal

– I.

- 3 haematic splenic endothelial reticulum

Example of deep hepatic drainage

- ❖ DRE 4 (liver) + at the same time
- ❖ 10 days of DRE 6 (lymphatic)
- ❖ and 10 days of DRE 16 (internal)
 - 60 drops (of each one) in 1/2 litre of water
 - to repeat in cycles
 - liver+lymphatic+internal

Example of PNEI drainage in aesthetics (ginoide obesity)

- ❖ DRE 8 (F gen.) + at the same time
 - ❖ 10 days of DRE 12 (nervous)
 - ❖ and 10 days of DRE 3 (immune)
 - 60 drops in 1/2 litre of water
 - to repeat in cycles
- genital+nervous+immune

Action plan

❖ SIN X

❖ DRE 16

- Classic
- PNEI

❖ DIS 11

- Alimentary
- Environmental
- Infective
- Non-Essential

❖ RIGE 1

- Organs
- Reproductive
- Senescence

The end